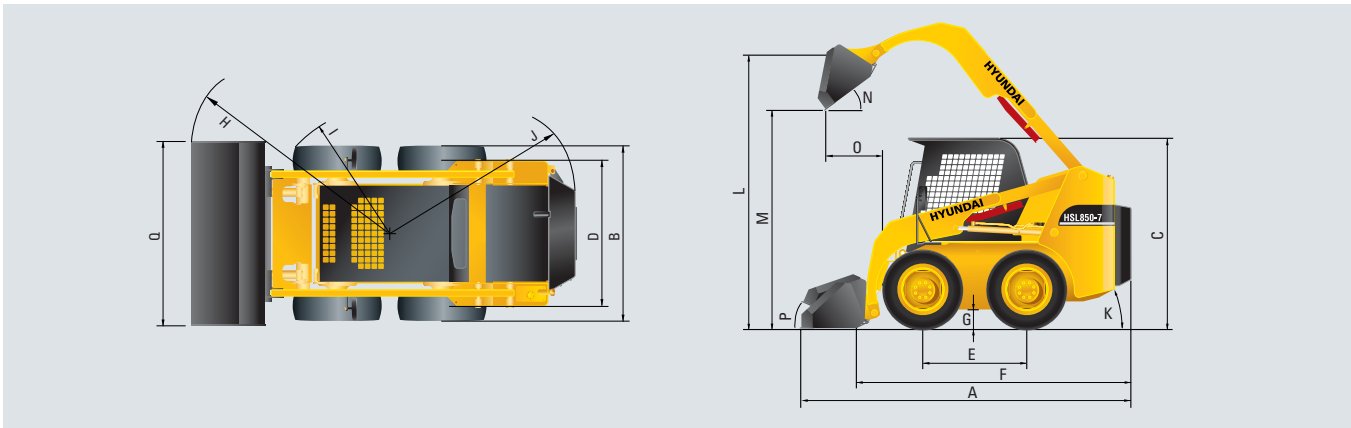


DIMENSIONS



SPECIFICATION

DESCRIPTION	UNIT	HSL850-7
Rated operating capacity	lb (kg)	1,852 (840)
Tipping load	lb (kg)	3,715 (1,685)
Operating weight	lb (kg)	7,253 (3,290)
Model	-	Kubota V3300D1
Gross output	PS (kW)	68 (50)
Net output	PS (kW)	66 (48.5)
Rated speed	rpm	2,400
Cooling	-	Water
Steering controls	-	2 Levers
Loader controls	-	-
Tires-standard	-	12-16.5,12PR
Max. travel speed	mph (km/h)	7.2 (11.6)
Loader pump flow	gpm (ℓ /min)	17.70 (67.0)
Loader pressure	psi (bar)	2,538 (175)
A Length with bucket	in (mm)	136.6 (3,470)
B Width, less bucket	in (mm)	72.0 (1,830)
C Height to cap top	in (mm)	78.7 (2,000)
D Tread	in (mm)	59.1 (1,500)
E Wheelbase	in (mm)	43.3 (1,100)
F Length, less bucket	in (mm)	111.8 (2,840)
G Ground clearance	in (mm)	8.1 (205)
H Turn radius, bucket	in (mm)	81.9 (2,080)
I Turn radius, front tire	in (mm)	51.2 (1,300)
J Turn radius, rear and corner	in (mm)	65.4 (1,660)
K Rear departure angle	-	28°
L Height to bucket pivot pin	in (mm)	121.3 (3,080)
M Max. dump height	in (mm)	94.9 (2,410)
N Dump angle	-	45°
O Reach at max. dump	in (mm)	20.1 (510)
P Rollback at ground	-	27°
Q Bucket width	in (mm)	74.6 (1,894)
Bucket cap. heaped	ft² (m²)	13.1 (0.37)
Fuel capacity	gal (ℓ)	22 (83)
Hyd reservoir capacity	gal (ℓ)	15 (57)

STANDARD EQUIPMENT

- Hand throttle lever
- Direct cooling system
- Dual element aircleaner
- Aux. piping (3-spool)
- Joystick lever
- Bow tie drive chain
- Console
- Mold dashboard
- Canopy (ROPS/FOPS)
- Room mirror
- Vandalism Protection
- Spark arresting muffler
- Seat bar & seat belt

OPTIONAL EQUIPMENT

- Pre-cleaner
- Self levelling system
- Master switch
- Backup alarm
- Enclosure Cabin (ROPS/FOPS)
- Heater
- Air-con & heater
- Defroster
- Fenders
- Side mirrors
- Turn lamp
- Foot control option



■ Some of the photos may include optional equipment.

HSL850-7

SKID STEER LOADERS

Standard and optional equipment may vary. Contact your Hyundai dealer for more information. The machine shown may vary according to International standards.
All US measurement rounded off to nearest pounds or inches.

HYUNDAI HEAVY INDUSTRIES CO.,LTD. CONSTRUCTION EQUIPMENT

Head Office(Sales Office)
1 JEONHA-DONG, DONG-GU, ULSAN, KOREA Tel (82) (52) 202-7970, 7729, 0971 Fax (82) (52) 202-7979, 7720

U.S. Operation : Hyundai Construction Equipment U.S.A., Inc.
955 ESTES AVENUE, ELK GROVE VILLAGE IL., 60007 Tel (1) 847-437-3333 Fax (1) 847-437-3574

European Operation : Hyundai Heavy Industries Europe N.V.
VOSSENDAAL 11, 2440 GEEL, BELGIUM Tel (32) 14-56-2200 Fax (32) 14-59-3405

India Operation : Hyundai Construction Equipment India Pvt., Ltd
PLOT NO.A-2, CHAKAN INDUSTRIAL AREA, VILL.-KHALUMBRE,
TALUK.-KHED, DIST.-PUNE 410 501, INDIA Tel (91) 21-3530-1700 Fax (91) 21-3530-1712

PLEASE CONTACT

www.hyundai-ce.com

2008. 12 Rev 3.

HYUNDAI
HEAVY INDUSTRIES CO.,LTD.

We build a better future

NEW HYUNDAI SKID STEER LOADER HSL850-7



Some of the photos may include optional equipment.

An ideal arrangement of component parts ensure easy access and convenience for maintenance.



Quick engine access

A swing out tailgate opens the way to engine checks and fills, for the battery and oil drain. The oil cooler is removable to allow the radiator to be easily cleaned.



Centralized fuse box for easy inspection



Spark arresting muffler



Quick attachment system

Quick attachment device provides fast cycle time and easy operation.



Double safety canopy

Double locking system for canopy enables service to be safer while canopy is raised up open.



Boom Locking system

Loader cylinder locking bar is provided for service work.



Tilting canopy for easy access

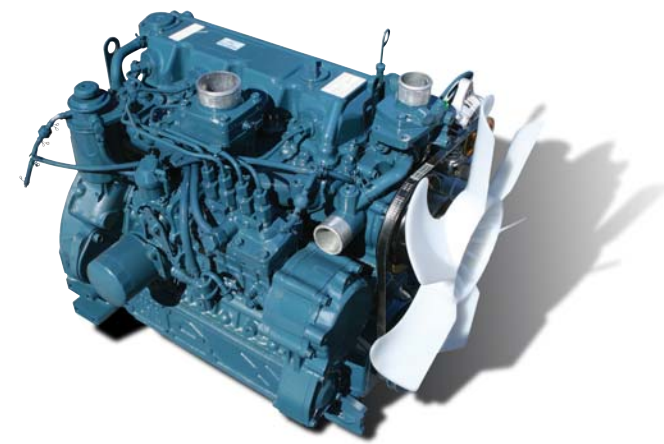
Service technicians can get to hydraulic/hydrostatic components quickly by removing two nuts simply and lifting the canopy back. Gas spring for easier lift and locking device are installed.



Hydraulic oil level gauge

Some of the photos may include optional equipment.

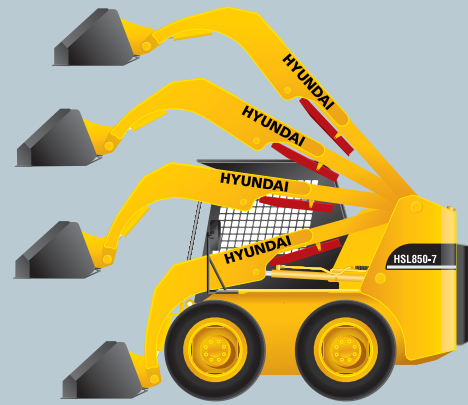
Emission Regulated Engine
Environmental Friendly worldwide



KUBOTA V3300DI ENGINE

Market approved quality of Kubota V3300DI engine ensures incomparable performance, durability and additional value to the machine. 68ps of the engine is more than enough to suit any work, not just with normal bucket but with special attachments requiring high power as well.

Self levelling control system



The self levelling control system is available as option for lifting operations. When raising the loader boom, the bucket positioning valve directs the oil from the boom cylinder to the bucket cylinder to maintain the level of bucket automatically for more efficient load handling works. Operator can concentrate on maneuvering and lifting tasks for fast cycle times. **(Optional item)**

HSL850-7



Easy access for maintenance

Full open type canopy applied and control valve arranged on the upper position provides all pipes and relief valve easy access for maintenance.



Comfortable & Safety

ROPS/FOPS canopy is designed for operator comfort, safety and excellent visibility to maximize productivity. Wide entrance of operator compartment, handles and non slip foot steps are provided for operator convenience.

Joystick lever



Simultaneous Control of Travel & attachment

Reliable safety device



The adoption of a double safety gear minimizes the occurrence of accidents. A safety lever is to stop all functions when the operator departs from the unit ; the hydraulic line is to be cut off when the key is removed. The parking brake is to be engaged by raising the safety bar.

Power & Comfortable Operation



Increase front visual range



Foot rest



Centralized switches



Centralized dashboard



Multi-purposed storage box



ROPS / FOPS Canopy

ROPS : Roll Over Protective Structure
 FOPS : Falling Object Protective Structure